

# start blushing



**Grafton**  
PRIVATE LABEL COSMETICS





# Blush

Why your brand needs this?

Blushes are a staple item in any beauty brand! Choose from our large variety of shades and finishes that best fit your cosmetic line.

A collection of pigmented, pressed powder blushes, in a soft, buildable formula. Ranging from matte to high-frost finishes.

**INGREDIENTS** Talc, octyl palmitate, cyclomethicone, zinc stearate, phenoxyethanol, sodium benzoate, mica. May contain: iron oxides, manganese violet, titanium dioxide, yellow #5, red #6, #7, #30, blue #1, ultramarines, chromium green  
Net Weight: .11 Oz/3.1g

## PACKAGING OPTIONS



Pan only in clam shell, or can be assembled in palettes



Matte View Compact  
Ideal for logo printing



CRUELTY FREE

MADE IN USA



Perfect for highlighters or blush



#815 | PEACH KISS  
Super frosted peachy pink



#801 | PINK CHAMPAGNE  
Super frosted light pink



#802 | ROSE QUARTZ  
Frosted true pink



#816 | PINK BLISS  
Iridescent pink, hint of lilac



#805 | PIXIE DUST  
Shimmery golden bronze



#501 | CHIC  
Frosted rose-pink



#406 | TEA ROSE  
Medium, subtle peach-pink



#423 | PEACH PARADISE  
Light, bright peach



#476 | CRUSHED APRICOT  
Pale pastel cream peach



#416 | KISS OF PEACH  
Bright electric pink



#810 | KITTEN  
Frosted pastel pink



#471 | COTTON CANDY  
Iridescent pink, hint of lilac



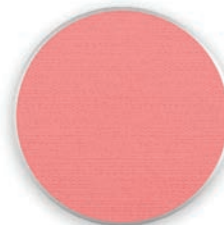
#486 | NUDE  
Shimmery pale pink



#487 | AU NATURELE  
Matte muted mauve



#474 | PEACH NECTAR  
Medium salmon rose



#456 | APRICOT  
Matte medium peach



#500 | FORGET ME NOT  
Light nude peach



**#459 | NUGGET**  
Very shimmery copper-gold



**#514 | HONEY**  
Soft shimmery tan nude



**#498 | PERCEPTIVE**  
Warm light gold peach



**#515 | NEARLY NUDE**  
Soft nude with light shimmer



**#516 | BLUSHING NUDE**  
True matte nude



**#517 | BEACH BUM**  
Shimmery peachy nude



**#518 | VACAY**  
Matte peachy nude



**#401 | CONTOUR**  
Matte neutral brown



**#444 | SHEER MOCHA**  
Bright warm red, peach undertone



**#448 | MOJAVE**  
Warm brick brown



**#519 | BURNT CORAL**  
Matte peachy nude



**#405 | TOUCH OF PINK**  
Rose-brick pink



**#413 | MOCHA**  
Deeper tone rose



**#494 | DOZEN ROSES**  
Matte rose-pink



**#513 | CHOCOLATE**  
Deep with neutral undertone



**#512 | CHESTNUT**  
Deep warm with red undertone



**#510 | ROSE**  
Shimmery red



**#806 | AMBER SKY**  
Super frosted berry nude



**#455 | TERRA ROSE**  
Neutral pink, hint of brown



**#470 | SHOOTING STAR**  
Medium, sheer, muted-lilac



**#480 | RAISIN CAIN**  
Sparkly, muted, brown-plum



**#520 | WILDBERRY**  
Cool plummy brown



**#484 | DUSK**  
Light taupe pastel



**#454 | HAZELNUT**  
Matte taupe



**#503 | TEMPTRESS**  
Light pastel lilac, hint of pink



**#472 | PRETTY PINK**  
Light pastel lilac



**#458 | SHEER**  
Soft earth tone nude pink



**#402 | WHITE LITE**  
Soft light cream

# Color Library

## BLUSH

• Minimum required for Color Library Shades, please contact your Brand Consultant for more information •



**#443 | PEACHY PUFF**  
Pale pastel peach



**#467 | PINK MIRAGE**  
Pale pastel pink



**#442 | ROSEWOOD**  
Pale nude



**#493 | SURRENDER**  
Pale warm nude



**#468 | LOCA MOCHA**  
Light berry brown



**MINERAL CHIFFON**  
Matte soft pale pink



**#481 | AMARETTO**  
Iridescent ginger pink



**#435 | PINK BROWN**  
Medium tone berry plum



**#441 | INTOXICATION**  
Deep berry



**#438 | PLUM BROWN**  
Berry brown



**#439 | SABLE**  
Medium brown with a hint of red



**MINERAL KAVA**  
Matte warm nude



**MINERAL ALL AGLOW**  
Soft shimmery light nude



**MINERAL DOGWOOD**  
Matte cool nude



**#506 | SAND TROPEZ**  
Medium rosy plum



**#479 | GRAPES OF WRATH**  
Deep eggplant



**#507 | SUGAR PLUM**  
Medium iridescent lavender



**#465 | HAZE**  
Light shimmery plum



**#478 | SANIBEL SUNSET**  
Bright coral pink



**#429 | WILD ORCHID**  
Bright medium tone pink



**#477 | HONEY ROSE**  
Bright peachy pink



**#431 | BERRY BURGANDY**  
Pure cranberry



**#509 | COSMIC RASPBERRY**  
Berry purple



**#415 | CLASSIC PLUM**  
Medium tone berry pink

# Color Library

## BLUSH

• Minimum required for Color Library Shades, please contact your Brand Consultant for more information •



**#813 | ATTITUDE**  
Frosted light cranberry



**#464 | PASSION**  
Metallic deep plum



**#502 | GLAZED AMETHYST**  
Sparkly berry pink



**#504 | WILD RASPBERRY**  
Medium tone purple with pink



**#807 | SORBET**  
Super frosted peachy pink



**MINERAL PEONY**  
Matte peachy pink



**#508 | POPPY FIELD**  
Light pastel orange



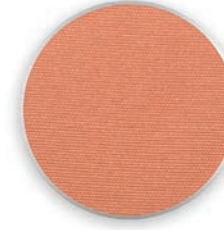
**#495 | LIFE'S A PEACH**  
Matte peach-orange



**#511 | PEACH VIBES**  
Frosted peach



**#440 | GINGER**  
Warm ginger red



**#475 | GOLDEN LADY**  
Warm ginger peach



**#814 | SPICY**  
Frosted pink apricot



**#446 | ADOBE**  
Light dusty plum



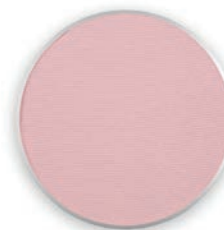
**#460 | CHESTNUT BEIGE**  
Soft earthy peach



**#452 | PRIMROSE**  
Soft nude neutral pink



**#417 | TROPICAL TAN**  
Medium ginger brown



**#485 | BLUSHING**  
Light pastel pink



**MINERAL TRANQUIL**  
Frosted soft nude



**MINERAL SATIN**  
Matte light nude



**MINERAL NECTAR**  
Matte soft peach



**#496 | RELIC**  
Soft dusty rose



# Blush Trio Palettes

*A buildable, blendable, blush palette filled with 3 perfectly paired shades that can be used together or separately to give your cheeks the perfect touch of blush. Easy to use & conveniently packaged. Richly pigmented blush formula!*

## INGREDIENTS

Talc, Octyl Palmitate, Cyclomethicone, Zinc Stearate, Phenoxyethanol, Sodium Benzoate, Mica. May Contain: Iron Oxides, Manganese Violet, Titanium Dioxide, Yellow #5, Red #6, #7, #30, Blue #1, Ultramarines, Chromium Green

Net Weight: .33 Oz /9.3g

*Why your brand needs this?*

Blushes are a staple and your customers will love these ranges of colors! Build your brand's awareness by printing your logo or design on the front of this sleek, 3 pan palette.

**CRUELTY FREE**



**MADE IN USA**



RED ROSE



PINK HIBISCUS



MAUVE LILY



PEACH TULIP

## PACKAGING



## Want to create your own palette?

Bring your vision to life by selecting **3 colors of your choice** from our extensive collection and create your own exclusive palette. 36 piece min. to have your selected shades filled into your customized Blush Trio Palette.



# 2 in 1 Cream Blush & Lip Tint

Why your brand needs this?  
Looking for a versatile item for your brand? Our 2 in 1 Cream Blush/Lip Tint is something your customers must have! One quick swipe for a tinted lip or ultra-glowing cheek.

A versatile cheek and lip tint that glides on and glows. Infused with moisturizing plant oils: shea butter, olive oil, jojoba seed oil, and anti-inflammatory myrrh oil.

## INGREDIENTS

Caprylic/Capric Triglyceride, Mica, Ethylhexyl Palmitate, Ricinus Communis (Castor Oil), Ceresin, Phenyl Trimethicone, Microcrystalline Wax, Aluminum Starch Octenylsuccinate, Titanium Dioxide, Beeswax, Sorbitan Sesquioleate, Oleic Acid, Tocopheryl Acetate, Ethylene Brassylate, BHT, May Contain: Iron Oxides, Manganese Violet, Red 6 Lake, Red 7 Lake, Red 40 Lake, Yellow 6 Lake, Talc

Net Weight: .11 Oz/3.3g

## PACKAGING OPTIONS



Pan only in clam shell, or can be assembled in palettes



Matte View Compact  
Ideal for logo printing



**CRUELTY FREE**

**MADE IN USA**



CORAL MIST



FELICITY



GLORIOUS



HARMONY



OASIS



SWEPT AWAY



TOTALLY SHY



PINK ESCAPE



NEUTRAL



DARING



BRONZE GLOW

# Baked Blushes

*Why your brand needs this?*

Does your brand offer a beautifully baked blush? These blushes are baked (not pressed like traditional blushes) to give them a unique dome-like appearance and color-payoff that is unmatched by any other formula. Just one swirl of a brush blends these beautiful shades together to give cheeks the perfect glow.



*These shimmery blushes start as a cream and are baked for 24 hours on a terracotta pan, creating a dome shape, and an unparalleled silky texture.*

Net Weight: .32 Oz/9g

## PACKAGING OPTIONS



Pan only in clam shell



Matte View Compact  
Ideal for logo printing



**CRUELTY FREE**

## BAKED MINERAL COLOR SPLASH



ANGELIC



GINGER



SPICY



FIESTA

**Versatile product:**  
May be used as Blush, Highlighter, and Bronzer!

**INGREDIENTS** Mica, Sericite Mica, Simmondsia Chinensis (Jojoba) Seed Oil, Carthamus Tinctorius (Safflower) Seed Oil, Lavandula Angustifolia (Lavender) Flower Extract, Thymus Vulgaris (Thyme) Extract, Camellia Sinensis (Green Tea) Extract, Tocopheryl Acetate, Rosmarinus Officinalis (Rosemary) Leaf Extract, Iron Oxides

## Color Library

Minimum required for Color Library Shades. Please contact your Brand Consultant for more information



## BAKED MINERAL LÉ ROUGE

• Use as a Blush or Bronzer! •



APRICOT SWIRL



BERRY SWIRL



BRONZE SWIRL



COPPERTONE SWIRL



GUAVA SWIRL



PINK SWIRL

**INGREDIENTS** Mica, Sericite Mica, Simmondsia Chinensis (Jojoba) Seed Oil Carthamus Tinctorius (Safflower) Seed Oil, Lavandula Angustifolia (Lavender) Extract, Thymus Vulgaris (Thyme) Extract, Camellia Sinensis (Green Tea) Extract, Tocopheryl Acetate, Rosmarinus Officinalis (Rosemary) Leaf Extract, Iron Oxides

## BAKED MINERAL BLUSH FUSION



MATTE APRICOT FUSION



MATTE BERRY FUSION



PEACH FROST FUSION



RASPBERRY FROST FUSION

**INGREDIENTS** Mica, Sericite Mica, Silica, Dimethicone, Simmondsia Chinensis (Jojoba) Seed Oil, Carthamus Tinctorius (Safflower) Seed Oil, Lavandula Angustifolia (Lavender) Flower Extract, Thymus Vulgaris (Thyme) Extract, Camellia Sinensis (Green Tea) Extract, Tocopheryl Acetate, Rosmarinus Officinalis (Rosemary) Leaf Extract, May Contain: Iron Oxides, Titanium Dioxide, Ultramarine



# Blush Bouquet

A combination of pigmented, powder blushes, pressed into a beautiful flower shape. Ranging from matte to high-frost finishes.

## INGREDIENTS

Talc, Mica, Titanium Dioxide, Octyldodecyl Stearoyl Stearate, Oryza Sativa (Rice) Bran Wax, Diisostearyl Malate, Hydrogenated Polyisobutene, Dimethicone, Zinc Stearate, Polyisobutene, Bis-Diglyceryl polyacyladipate-2, Oryza Sativa (Rice) Powder, Dimethicone Trimethylsiloxysilicate, Dimethicone/Vinyl Dimethicone Crosspolymer, Polysiloxane, Magnesium Stearate, Capryloyl Glycine, Deidrocetate Sodium, Undecylenoyl Glycin, May contain: Iron Oxides, Ultramarines, Manganese Violet

Net Weight: .758 Oz /21.5g

*Why your brand needs this?*  
Ready for your brand to blossom? Let your brand stand out in the industry with this unique rose pattern blush bouquet. Each blush comes with a variety of colors that when blended together, create a beautiful, pigmented blush tone.

## PACKAGING OPTIONS



Pan only in clam shell, or can be assembled in palettes



Matte View Compact  
Ideal for logo printing



**CRUELTY FREE**

**MADE IN USA**



AUTUMN FLOWER



GARDEN BOUQUET



ROSE PETAL

## Color Library

Minimum required for Color Library Shades. Please contact your Brand Consultant for more information



PINK CARNATION



PRETTY-N-PINK



MAPLE LEAF



# Cheek Contour

*Why your brand needs this?*  
Your customers will love how easy it is to add the perfect pop of color with these cheek contours. Use each color individually for highlighting and contouring, or combine all 3 beautiful shades together to make the perfect contoured cheek!

**Highlight, brighten & contour with an all-in-one cheek combo.**

## INGREDIENTS

Talc, Mica, Nylon-12, Magnesium Stearate, Silica, Hydrogenated Polyisobutene, Dimethicone, Octyldodecyl Stearoyl Stearate, Phenoxyethanol, Bis-Diglyceryl Polyacyladipate-2, Tocopheryl Acetate, Ethylhexylglycerin.  
May contain: Titanium Dioxide, Iron Oxides, Ultramarine Blue, Red 7 Lake, Red 6, Manganese Violet  
Net Weight: .3 Oz/8.5g

## PACKAGING OPTIONS



Pan only in clam shell



Matte View Compact  
Ideal for logo printing



**CRUELTY FREE**  
**MADE IN USA**



BRONZE



CORAL



PINK